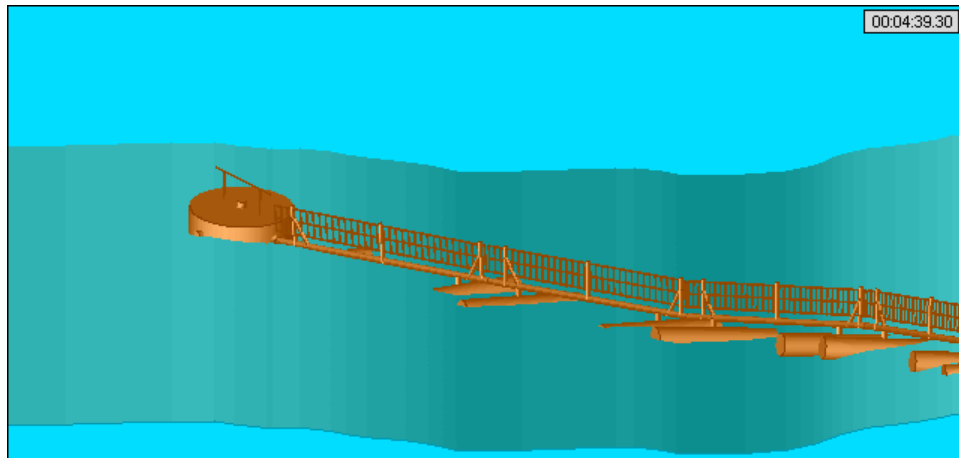
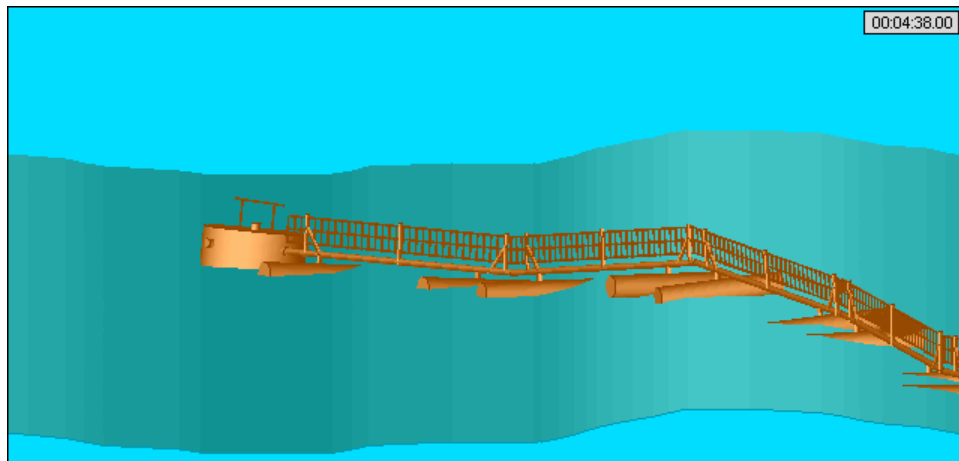


A partial sample of modeling and analyses is shown below. In this example an analysis is conducted to determine the barrier behavior in winds, wind gusts, waves and currents for a particular site. For example: a broadside 50-knot 30-second winds with associated gusts; broadside 3-knot current; waves for a 6 nautical mile fetch with a 150-foot water depth are predicted to have a significant wave height of 4.6 feet and a period of peak energy density of 4.1 seconds. AQWA drift analyses show the system behaves well in these conditions.



**955-Foot PSB 600 Gate Behavior in
Broadside 50-Knot Conditions
(Tension @ Buoy Sign=11.7 kips, Peak=17.9 kips
@2nd Unit Sign = 10.7 kips, Peak=16.8 kips)**